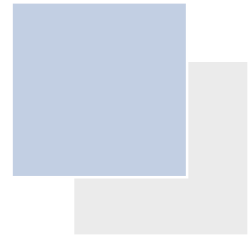


ASWAQ 6

THE INTEGRATED BUSINESS MANAGEMENT SOLUTION

ASWAQ6 is designed exclusively to serve Arab users and decision makers. With a rich set of features and functions, ASWAQ6 covers the needs of local businesses and empowers decision makers to take the right decisions in managing their business. With its unique user interface, it provides a convenient and productive environment where users can manage business information effectively and effortlessly.





Ajyal Systems Group

Established in 1989, Ajyal Systems Group was one of the pioneering business software producers in the Middle East.

Objectives and Vision

Ajyal aims at improving the profitability and efficiency of local businesses through specialized business software that guides decision makers, and enhances users' productivity. Ajyal plays an active role in Software Technology, and aspires to elevate our region from technology consumption, to a more active role that contributes to global technology making.

In order to achieve these ambitious targets, Ajyal Adapts a strategy that includes producing high quality applications, to stand head –to-head with international products in quality and attention to fine details, while keeping focused on the needs and requirements of local users and businesses.

Ajyal recognizes the crucial role of customer service in the IT field, and considers after-sales service an integral part of its products. Through a network of branches and business partners, Ajyal is able to serve customers in all GCC states and Egypt, and plans to extend its services to cover all Arab countries.

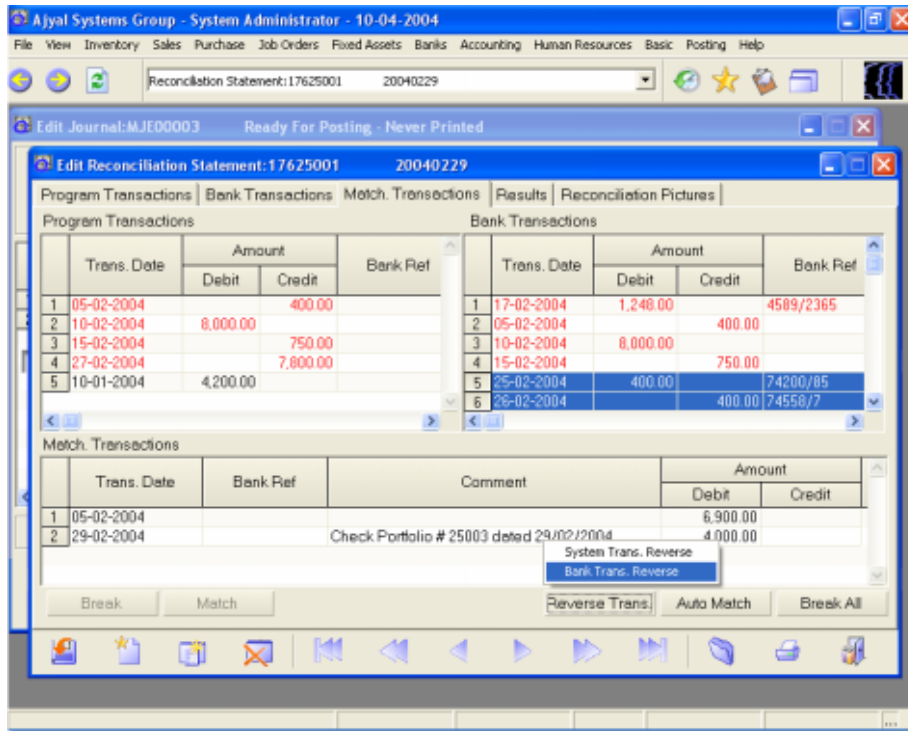
Today, thousands of businesses rely on ASWAQ to run their operations effortlessly, while Ajyal re-aligns its efforts and investment to become the largest business software house in the Middle East, and to extend its reach to international frontiers. To achieve this aim, Ajyal stands firmly on the following simple foundation:

- Continuous development to our solutions using the latest software engineering technologies.
- Focus and emphasis on the business requirements of our region.
- Improve customer service to help users carry out better business with less effort.
- Extend our coverage by opening up service centers throughout the region.

Milestones

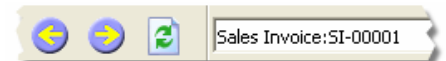
- Ajyal launches its first product – ASWAQ 1 – under DOS 1991
- Ajyal opens its second branch in Kuwait 1993
- Ajyal introduces ASWAQ3, one of the first Arabic enabled accounting applications under Windows 3.1 1994
- Ajyal introduces the first, and only, built-in bilingual report designer for AS-WAQ 1995
- Ajyal opens 8 branches throughout GCC states and Egypt 2000
- Ajyal launches ASWAQ4, with newer GUI and features, and upgrades all users at no extra fee 2001
- Ajyal launches ASWAQ6, the most advanced, feature-rich business solution in our region. 2004

Features & Benefits



Convenient User Interface

ASWAQ6 adapts a unified look and feel in all its windows and functions, with a user interface resembling Web browsers. In this familiar environment, users can freely navigate between windows and pages, bookmark locations, define favorites, and much more. ASWAQ6 adapts automatically to different resolutions and color depth to provide clearly readable windows and screens.



Complete and Thorough Support for Arabic and English

Bilingual support in ASWAQ6 is unparalleled by any other software. The language of the entire program or a single window can be altered at any time during operation. In addition, fields can be locked to accept data in only one of the languages if desired. ASWAQ6 fully supports Hijri and Gregorian dates. The program transparently handles date conversion from one system to the other during data entry and reporting.



Full Support to Operating Systems and Databases

ASWAQ6 operates under all windows versions; from Windows 98 to Windows XP, and supports today's most advanced two databases; namely Microsoft SQL Server and Oracle.

The Flexibility of an Open Design

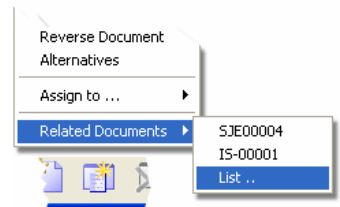
ASWAQ6 is designed as an open system that adapts to the diverse needs of organizations in our region. This design is crowned by ultimate flexibility in defining the accounting interfaces of each document, with complete freedom in determining the accounts that will be affected when a document is posted.

ASWAQ6 does not impose rigid rules on its users; in contrast, it adapts itself to operate in the users' preferred manner.

Features & Benefits

Integration and Consistency as it should be

The degree and quality of integration that ASWAQ6 provides is unmatched in the local market! It requires absolutely no effort to carry reflections forward from one module to the other. Once a transaction is posted, ASWAQ6 automatically carries out all its accounting and inventory effects without further user interaction. Furthermore, ASWAQ6 does not require a special procedure in order to switch from one fiscal period to another inside the fiscal year.



Decision Making Information at Your Fingertips

ASWAQ6 helps users to make the right business decisions more effectively by saving their time and effort. The application displays sensitive decision-making information while users enter transactions and assists decision-making by displaying this information online. For example it displays the available quantity of the products, client balances and credit limits during the editing process of a sales invoice.

| | | | | | | | |
|----------------|---------------------------------------|-----------------|-----------------|----|---------------|---------------|-----|
| Account:110301 | ... Folio Account - Ahly Bank - Riyal | Blnc: 36,850.00 | Bdgt: 36,850.00 | SR | Rate: 1.00000 | Balance Sheet | ... |
|----------------|---------------------------------------|-----------------|-----------------|----|---------------|---------------|-----|

Robust Security System

ASWAQ6 includes a robust, high quality security system. The rights of each and every user are clearly defined in terms of the functions and procedures he can execute. In addition, sensitive records can be assigned to certain users or users group to reduce unauthorized access risk. ASWAQ6 enables management to issue audit trails that will include each users' activities inside the system.

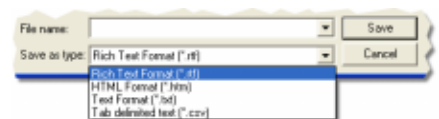
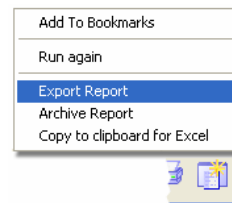
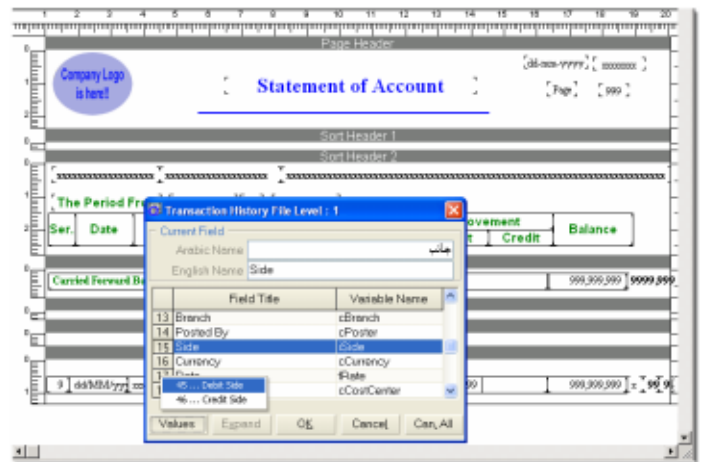
| | Menu | Screen | Authority |
|---|-----------------------|---------------------------|---------------|
| 1 | Currencies | Currencies | Add-Edit |
| 2 | Chart File | Chart File:Main | Full Rights |
| 3 | Chart File | Chart File:Balance | Add-Edit |
| 4 | Cost Centers File | Cost Centers File:Main | Edit-Del |
| 5 | Cost Centers File | Cost Centers File:Balance | Add |
| 6 | Analysis Code | Analysis Code | Edit |
| 7 | Journal Entry Voucher | Journal Entry Voucher | View |
| | | | Access Denied |

The Report Designer; You're Limited Only by Your Imagination!

In 1995, Ajyal introduced, for the first time in the area, a financial application with a built in report designer. Today, almost a decade later, ASWAQ6 is still the only business application in the Arab region with an integrated report designer!

The report designer built in ASWAQ6 empowers users to modify existing reports and to add new reports to their setups as well. The report designer is as bi-lingual and Arabic-aware as ASWAQ6 itself. When a user designs a report in English, it will run in Arabic correctly with proper alignment, orientation, and content! And since the report designer was designed specifically for ASWAQ6, it offers a very sensible approach to the design process because it knows the nature and schema of its underlying database and it integrates properly with ASWAQ6 security model.

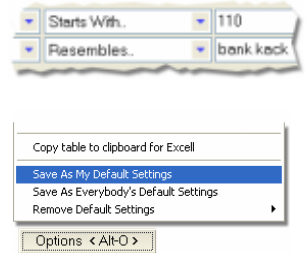
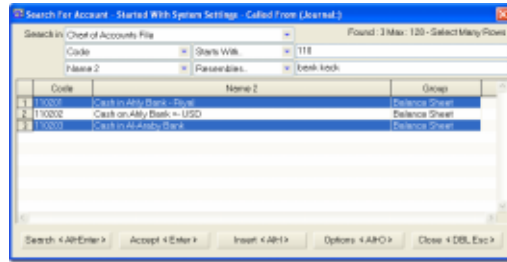
The report designer hosts state of the art reporting features including hyperlinks, expression based filtering, grouping and sorting, financial support functions and features, simple and powerful expression definition language, conditional colors and fonts, and many more cutting edge presentation capabilities.



Features & Benefits

Smart Search; a Technology Unique to ASWAQ6

ASWAQ6 is distinguished by its smart search facility, which enables users to find the desired items using a unique spelling forgiving system that is designed to tolerate both Arabic and English common spelling mistakes. The simple yet powerful search facility allows users to locate desired information based on flexible filtering and display parameters that individual users can customize to their preference.



Tons of Features to Make Your Life Easier

ASWAQ6 contains an enormous amount of features that you'll not find, combined, in any other single integrated application:

Report archiving and export facility to reduce paper trails and ease information exchange.

Full barcode support, including printing barcodes in various formats and using different printers.

Supports all Point of Sale peripherals.

Information exchange with banks for salary deposit and statement conciliation.

Information exchange with hand held computers for stock taking.

Information exchange with electronic time attendance systems.

High Quality Services

Ajyal considers technical support services an integral part of ASWAQ itself! Our qualified staff provides onsite and electronic technical support services, in addition to training, consultants, and implementation services.

General Ledger

ASWAQ6 includes a robust and high performance general ledger module that integrates seamlessly with all the other modules. It can handle millions of transactions and entries with utmost efficiency and stability.

Extremely flexible chart of accounts

The chart of accounts can branch hierarchically up to 16 levels! ASWAQ6 does not impose any rules on accounts' coding system. Implementers and users can choose accounts codes in any form they like. Opening foreign currency accounts is a snap. ASWAQ6 provides enough facilities to re-evaluate foreign currency local equivalent, with proper reflections to exchange rate profit and loss.

| Period | Movement | | Balance | |
|------------|------------|------------|---------|----------|
| | Debit | Credit | Debit | Credit |
| 1 Total | 168,422.00 | 112,256.25 | | 3,872.45 |
| 2 Opening | | | | |
| 3 January | 43,635.00 | 43,230.00 | 405.00 | |
| 4 February | 38,552.00 | 39,662.00 | | 1,110.00 |
| 5 March | 18,235.00 | 21,403.25 | | 3,167.45 |
| 6 April | 8,888.00 | 6,000.00 | | |
| 7 May | | | | |

Fully Supports Cost and Profit Centers

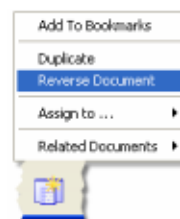
In ASWAQ6, cost centers allow tracking profits of subsidiary activities within the accounting unit, such as tracking certain project or branch. Implementers can create cost centers branched hierarchically up to 5 levels. ASWAQ6 will simply generate financial statements and reports for any cost center.

Advanced yet Simple Budgeting

Different budget scenarios can be defined for accounts, or accounts and cost centers combinations. These budget scenarios can be modified or amended. Follow up of actual versus budgeted amounts also take place in clear and organized windows.

Logical and Sensible Voucher Entry Windows

ASWAQ6 provides a very logical approach to voucher entry. The data entry windows resemble printed vouchers, allowing users complete freedom in moving among the document, adding accounts and narrations per line, or on the documents as a whole. Transactions can take place in local or foreign currency, and ASWAQ6 handles exchange rate and currency relations seamlessly.



Complete and Thorough Integration

Payment and receipt vouchers are tightly integrated with the rest of ASWAQ6 modules. Payments can be made against an invoice, and ASWAQ6 will automatically handle debt age related issues. In addition, checks can be coupled with a payment or receipt voucher while maintaining the proper relationship with commercial papers module of ASWAQ6. Both payment and receipt vouchers enable compound multi-line entries, and provide facilities on the degree of control users have over changing affected account.

A robust and high performance system to support millions of transactions

Flexible chart of account

Automatically calculates exchange rates profit and loss

Complete budgeting support

Comprehensive cost and profit center support

Automatic generation of recurring documents

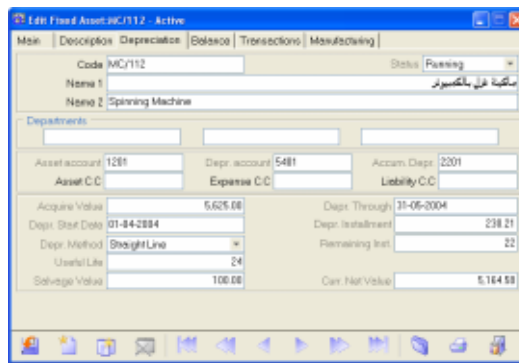
Analysis codes to assist in reporting and tracking various activities

Fixed Assets

ASWAQ6 includes an integrated system for fixed assets management that saves users the time and effort needed to prepare depreciation statements and reports. It provides decision makers with countless reports that contain a wealth of financial information related to fixed assets investment and life cycle.

Comprehensive File for Every Fixed Asset

ASWAQ6 organizes detailed information about every fixed asset in clear and descriptive windows. These windows contain asset properties, financial data and life cycle, in addition to acquisition and disposal properties. It's possible to attach any number of pictures and document images to each fixed asset, and navigate freely among them. ASWAQ6 provides detail balances information all fixed assets accounts in clear descriptive windows.



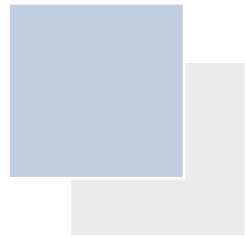
Straight Forward Asset Disposal and Re-Evaluation Procedures






ASWAQ6 contains a straight forward procedure to dispose of fixed assets by selling or scrapping, and can automatically calculate capital gain or loss resulting from asset disposal. It will also carry out proper journal entry reflections to represent all aspects of the disposal process. When a fixed asset is altered in a way that changes its useful life, ASWAQ6 hosts enough features to represent this change, and re-evaluate depreciation in-installments and salvage value, so that future depreciation processes are carried out correctly.

Automated Monthly Depreciation Reflections

ASWAQ6 automatically generates depreciation entries every fiscal period, thus, saving users a significant amount of time and effort and providing better financial status reporting that includes depreciation expenses with every period's financial statement.

| | Asset Code | Doc. #/Status |
|---|------------|---------------|
| 1 | MC/112 | Generated |
| 2 | MC/113 | Generated |
| 3 | MC/114 | Generated |
| 4 | MC/116 | Generated |



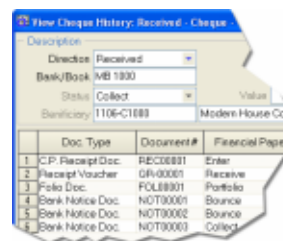
-  Automated generation of depreciation entries
-  Automated calculation of asset disposal profit or loss
-  Comprehensive set of reports on assets values and depreciation properties
-  Archival facilities to include fixed asset illustrations, images, and accompanying documents
-  Seamless integration with the general ledger module

Commercial Papers & Banks

ASWAQ6 provides a flexible and powerful environment for managing inbound and outbound checks and bills of exchange. In addition, ASWAQ6 contains a superior system for bank reconciliation that simulates manual procedures while requiring only a fraction of the effort and time needed to reconcile statements manually.

Complete Control over Commercial Papers Life Cycle

The life cycle of issued and received commercial papers is completely documented and followed up, from delivery to allocation to bank related transactions. Implementers have complete control over which documents to use and which documents to omit. Therefore, a simple or complete document cycle can be implemented depending on the level of control and details desired.



Complete Integration with the General Ledger

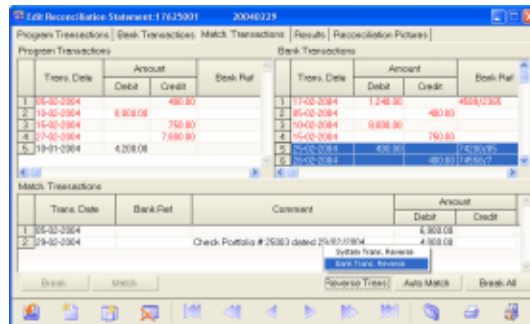
ASWAQ6 does not stop at following up the workflow and state transition of commercial papers to and from the organization. It supplements the workflow with proper journal entries reflections in the general ledger to express the location and status of each commercial paper. ASWAQ6 permits implementations that separate outstanding checks from debtors and creditors subsidiary accounts. Furthermore, ASWAQ6 permits independent subsidiary accounts to handle commercial papers received on a guarantee or collateral basis.

Electronic Bank Statement Reconciliation

ASWAQ6 can save users a tremendous amount of time and effort by reading electronic bank statements sent via email or magnetic disks. In this model, ASWAQ6 reads the electronic bank statement and compares it with system entries made against the bank account, automatically matching individual entries and offering managers instant view on system or bank transactions validity and correctness.

Intuitive Statement Matching

When it's time to match the statements sent by bank with the system internal transactions, ASWAQ6 offers a methodology superior even to dedicated reconciliation applications! Users are presented with a detailed worksheet and assisted by automatic matching to most of the entries. The matching process permits multi-line matching, and forgives reverse entries both in the system and the bank side. The final result of the process is produced instantly to the user and stored in the database for future reference and to assist future conciliations.



Handles all inbound and outbound commercial papers

Allows printing different checks according to predefined forms

Complete document cycle from receiving or issuing to collection

Full integration with the general ledger module

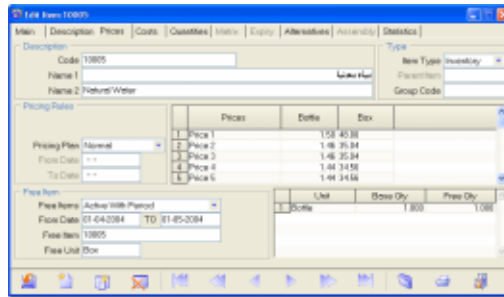
Comprehensive support for letters of guarantee

Inventory Control

Efficient control over inventory is vital for a trading organization to succeed. ASWAQ6 contains a module that is extremely rich in features and capabilities to achieve just that! Nevertheless, most of the features included in this module are optional; an organization may choose to implement the exact subset that suits its needs.

Extensive Information & Great Capabilities

ASWAQ6 can handle service items, assemblies and kits, and manufactured products. Items can be coded using up to 36 alphanumeric characters, with three different units of measurements, and an individual barcode for each unit. ASWAQ6 efficiently handles two dimensional items, products with expiry dates, items with serial numbers and multi-colored or multi-sized items. Users can specify many alternatives for each item, view these alternatives, and choose among them while editing documents. User can also attach any number of pictures for every item and easily navigate between them and include them in catalogues and printed documents.



A True Multi-Warehouse System

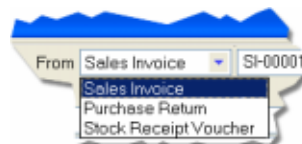
ASWAQ6 can open and handle up to 999 warehouses while various items can be allowed to move in and out of warehouses. In addition, ASWAQ6 offers instant access to individual and aggregate quantities per warehouse and allows users to define minimum and maximum levels per warehouse or on the organization level.

Perpetual Inventory = Accurate Financial Statements

ASWAQ6 seamlessly handles inventory related GL reflections. With every inventory entry that takes place, ASWAQ6 will carry out the proper GL effect on inventory and cost of sales accounts. Accordingly, financial statements will always contain accurate and up-to-date information and users do not need to carry out labor intensive, or time consuming operations to reach proper inventory and cost of sales values.

Well-bonded Documents

ASWAQ6 contains all fundamental stock management documents. Issue, receipt and transfer vouchers, are all distinguished by great capabilities, and can handle very lengthy documents. As a natural result for ASWAQ6 through integration, each document carries its proper GL effect once posted, without further user intervention.



Physical Stock Taking In Minutes, not Days!

ASWAQ6 can automatically issue documents to adjust discrepancies between book and physical values once actual quantities are fed in. ASWAQ6 interfaces to hand-held data collection terminals, read and aggregate their data, and feed it instantly into its files and documents. Therefore, saving users a tremendous amount of effort and time, and providing better accuracy in handling discrepancies.

Accurate and instant information about inventory investment

Effectively operates with dimensional and multi-color or multi-size items

Support items with expiry dates and serial numbers

The fastest and most powerful barcode printing possible

Integrates with "data collection terminals" for fast and effective stock tacking procedures

Sales & Customers

ASWAQ6 contains a powerful system for sales management that provides all the procedures and tasks required to track sales transactions and control sales prices, terms, and other necessary tasks.

Several Pricing Policies

ASWAQ6 provides many pricing policies. Users can specify up to five price levels for each item and each measurement unit. Customers may be linked to these pricing levels where the program displays the proper price during order entry and invoicing. Seasonal prices may be defined and applied in a specific period, or periods, during the fiscal year.

Contract-fixed prices for certain items with certain customers, or customer groups, can be defined and enforced automatically by the system. Furthermore, discount levels, or minimum profit margins can be defined for individual salesmen, or users, for ASWAQ6 to reject sales below these parameters. ASWAQ6 also includes a complete procedure for automatically calculating items' prices, based on user definable formulas that may be applied to a group of items as once.

Complete Sales Targets Follow-up

Sales targets can be defined for each item, salesman, and customer. Through ASWAQ6 windows and functions, managers can track target achievement rates to take proper corrective decisions.

ASWAQ6 provides additional financial limits in respect to customers including credit limit and payment period. These limits are enforced while invoicing to guarantee proper application of company policy.

Sufficient Documents Covering All Sales Activities

ASWAQ6 contains all necessary sales documents including sales quotations, sales orders, invoices and returns. These documents can be easily linked together in a chain that saves time and effort. For instance, while editing a sales invoice, the user can easily recall a specific sales order or quotation and ASWAQ6 will construct the invoice based on its upper document.

ASWAQ6 can operate with all known sales cycles, as it supports order-deliver-invoice, and order-invoice-deliver cycles. It can also automate delivery through carrying out proper inventory effect once an invoice is fed.

Pricing policies per item, salesman, and customer

Full support for discount seasons

Complete control over profit margins and discount rates

Calculate customers, items and salesmen profitability

Complete sales statistics in a single window to indicate net sales compared to sales targets

Compare sales figures and targets with previous years by value and percent

Purchases & Vendors

The purchases module within ASWAQ6, like all the other system components, is featured with its flexibility and easiness, in entering and editing documents, with extensive reports covering all purchases activities

Powerful and Effective Vendors File

This file contains adequate contact information on every vendor, in addition to full statistical figures about each vendor's purchases and returns for every financial period.

Sufficient Documents Covering All Purchases Activities

ASWAQ6 contains all the necessary documents covering the whole purchasing cycle including purchase Quotation, Purchase Order, Purchase Invoice, and Purchase Returns vouchers. These documents can be easily linked together in a chain that saves time and effort. For instance, while editing a purchase invoice, the user can easily recall a specific purchase order or quotation and ASWAQ6 will construct the invoice based on its upper document.

ASWAQ6 can operate with all known purchase document cycles, as it supports order-deliver-invoice, and order-invoice-deliver cycles. It can also automate delivery through carrying out proper inventory effect once an invoice is fed.

Full Integration with Inventory and General Ledger Modules

Purchase documents are tightly integrated with the GL and inventory modules.

Purchase invoices may automatically generate stock receipt vouchers to carry out proper quantity and average cost effect. Furthermore, proper GL entries are constructed and posted automatically to reflect the effect of the purchase process on financial statements.

Flexible Representation for Importing and Extra Cost Allocation

ASWAQ6 hosts a flexible representation for importing operations. Users can easily allocate additional expenses onto a certain purchase transaction through a "direct cost voucher". ASWAQ6 will automatically distribute these allocated expenses on the imported items according to the quantity and price per unit with proper GL effects as well.

Full support for various purchase cycles

Automatically allocate additional expenses on purchases

A wealth of analytical and transactional reports

Intuitive interface to purchasing multi-colored and multi-sized items

Average cost progress analysis reports

Letters of Credit & Importing

The costing of imported goods, as it lands, arises as a sensitive and detail-intensive issue that requires considerable attention in order to calculate the landed cost accurately and efficiently. ASWAQ6 includes a dedicated, feature-rich, module that can help users with this delicate matter to improve the overall accuracy of calculating imported goods cost.

Recording Cost Elements Using Generally Accepted Accounting Principles

Cost elements are added to the letters of credit through normal accounting documents such as payment and journal vouchers. Individual and aggregated letter of credit balance appear automatically in transaction trails and financial statements without requiring any 'posting' or 'carry forward' procedure.

Calculating Landed Costs Using an Intuitive and Interactive Technique

When it's time to calculate landed costs, ASWAQ6 offers a worksheet that enlists all cost elements of the LC at hand, and requires the costing officer to provide the distribution method for each cost element. As the user selects the distribution method, ASWAQ6 allocates different shares to LC elements based on each item's value or volume / weight. The user gets immediate feedback on cost allocation per item and therefore sees the exact and whole picture prior to approving items costs.

| Item Code | Item Name | Unit | Quantity | Rec Qty | Difference |
|-----------|-------------------|----------|----------|---------|--------------|
| 1. 11001 | 29 Inch Color TV | TV-C | 300.000 | 300.000 | Accept |
| 2. 11002 | Video CD | VCD | 444.000 | 444.000 | Not Accepted |
| 3. 11001 | Personal Computer | Computer | 400.000 | 400.000 | Accept |
| 4. 11003 | Scanner | Scanner | 200.000 | 200.000 | Accept |

Cost distribution can be based on item value, weight, volume, or even manually. This facility allows users to allocate different costs on items accurately and according to each cost nature.

Receiving and Selling Goods Even Before Determining Landed Cost

The letters of credit module in ASWAQ6 allows user to receive LC's items into warehouses even before finalizing their cost. Furthermore, sales transactions can take place on these items prior to cost calculation. When all the costing elements have been gathered and entered, ASWAQ6 will transparently carry out adjustment entries against inventory and cost of sales accounts to reflect the actual landed cost of the items.

Thorough letters of credit information

Complete document archive

Tracking of Performance Invoices and stock receipts

Supports letters of credit, TTs, and other payment forms

Full support to single and multi shipment letters of credit

Receipts discrepancy management

Full integration with inventory and general ledger modules



Human Resources Management

ASWAQ6 contains a complete system for human resources management with all its elements and phases. The HR module forms a complete system on its own and integrates with the general ledger in financial aspects.

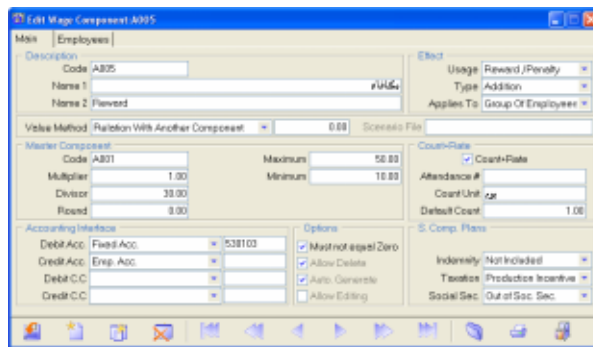
The human resources module is divided into two levels that can be used, combined, or only the first level can be implemented depending on the desired level of control and functionality required in the organization.

Comprehensive File for Every Employee

ASWAQ6 provides comprehensive base of information about each employee. The system generates many reports concerning the organization and its relations with governmental authorities. In addition, a complete archive of each employee's pictures and documents can be stored and printed, on demand, through ASWAQ6.

Utmost Flexibility and Power in Generating Salary Vouchers

ASWAQ6 can calculate simple and complex formula based salary components that depend on other components, or values from other modules such as sales commissions, income tax etc... Relationships and equations for calculating salary component values are prepared only once, subsequently, ASWAQ6 will automatically apply these principles each payroll period when generating salary vouchers.

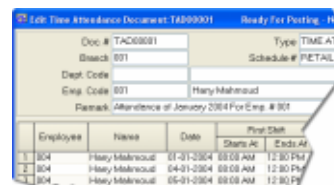


Complete Loan Management System

ASWAQ6 contains a comprehensive system for employee's loans. This system enables flexible and modifiable salary deduction schemes. It allows managers to reschedule loan payments, and postpone or exempt installments or portions.







Complete HR Document Cycle

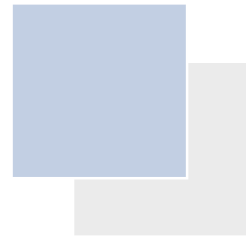
ASWAQ6 tracks vacations, annual and sick leave, daily and hourly permitted leave while posting proper reflections to salary vouchers and the GL. The human resources management system contains documents for performance appraisals, penalties and rewards, in addition to promotions or transfer procedures. It also supports periodic evaluation with all its features.



Integrated Time Attendance System

ASWAQ6 provides decision makers with full information regarding employees' attendance. ASWAQ6 can interface to electronic time attendance systems and post employee attendance information to HR module directly. Certain parameters can be configured to apply overtime and under-time rules directly to salary vouchers.

-  **Calculating the most complex salary components**
-  **Complete follow up of leave balance**
-  **Detailed reports to governmental authorities**
-  **Tracks rewards, penalties, and performance appraisal**
-  **Preparing direct deposit files for easy salary transfer and payment through banks**
-  **Accurate tracking of employee's attendance**



Job Order Processing

The Job Order Processing module, with its various functions and features, provides simple and productive environment for manufacturers, workshops and service organizations. It also includes many features that enable tracking long term commercial and service contracts.

Accurate Estimation of Production Cost

ASWAQ6 can accurately calculate the estimated cost of a particular production process, using various manufacturing elements entered in the bill of material including raw materials, labor hours, and machines hours, therefore allowing managers to take right decisions in terms of pricing and delivery.

Tracking Production Plans and Deviation from Estimated Costs

ASWAQ6 tracks the production process with all its aspects, including raw materials, and labor/machines operation hours. Instantly, managers and production supervisors can view progress indicators, raw material and labor usage, and deviation from planned resource allocation and cost. With simple controls, users can re-evaluate overall production cost based on latest raw material prices, and labor and machine rates.

| Type | Item Code | Item Name | Unit | Quantity | Planned | Actual | Unit Price | Original Value |
|----------------|-----------|------------------------|-------|----------|---------|--------|------------|----------------|
| 1 Item | CT206 | Carbon Paper- 115 CL | Pack | 1.000 | 1.000 | 1.80 | 1.80 | 1.800.00 |
| 2 Item | MT181 | Nylon Paper-CL | Pack | 1.000 | 1.000 | 1.90 | 1.90 | 1.900.00 |
| 3 Item | STC3001 | Mask Sticker-CL | Box | 5.000 | 2.000 | 45 | 140.00 | 700.00 |
| 4 Item | ZHT182 | Sheet Sulfone-CL Small | Box | 2.000 | 1.000 | 50 | 500.00 | 1.000.00 |
| 1 Machine Time | MCI2112 | Sawing Machine | Hours | 58.000 | 35.000 | 70 | 40.80 | 2.080.80 |
| 1 Job-Time | 001 | Plotoman | Hours | 58.000 | 48.000 | 80 | 80.80 | 3.080.80 |

Tracking Resource Utilization

ASWAQ6 tracks labor and machine resource allocation and utilization through dedicated documents. It can produce, on demand, labor and machine capacity utilization and idle time reports.

| Emp | Job Code | Date | Time | |
|-----|----------|-------------------------|-------|-------|
| | | | From | TO |
| 1 | 001 | MCI2004_1000 20-02-2004 | 09:00 | 03:00 |
| 2 | 002 | MCI2004_1000 20-02-2004 | 08:00 | 03:30 |
| 3 | 003 | MCI2004_1000 20-02-2004 | 09:30 | 05:00 |
| 4 | 004 | MCI2004_1000 20-02-2004 | 09:00 | 05:00 |
| 5 | 005 | MCI2004_1000 20-02-2004 | 08:30 | 04:03 |

Supports Build-to-Order, and Build-to-Stock Processes






ASWAQ6 supports linking the manufacturing process to a certain customer order, and therefore tracks delivery in addition to manufacturing. It also supports manufacturing directly to inventory in a manner completely integrated with the inventory module.

Supports Long Term Contracts

ASWAQ6 can track products and services delivery contracts with customers. This facility integrates with both inventory and sales modules. It also provides capabilities for periodically invoicing customers based on delivery of services and products.

Complete Support to Service Centers Activities

ASWAQ6 can track repetitive elements in job orders such as cars service workshops and electronic appliances maintenance centers. It enables users to generate detailed reports containing repair history, and warrantee related issues.

-  **Intuitive design suiting workshops and service centers**
-  **Accurate cost and resources utilization tracking**
-  **Effective follow up to long term contracts**
-  **Provides full visualization of manufacturing and delivery processes**
-  **Fully integrates with many other modules in ASWAQ6**

Point of Sale Management

Point of sale applications are distinguished by a unique operating environment that is fundamentally different from the environment that hosts back-office business applications. Many of the concepts and methodologies used in back-office environment are completely inappropriate for POS applications, and hinder users from serving customers effectively. ASWAQ6 understands the uniqueness of POS systems' environment, and provides a POS module that is both appropriate and customizable.

Point of Sale Interface the Way it should be

The POS user interface in ASWAQ6 was designed specifically for that purpose, and is completely different from the user interface of ASWAQ6 back office modules. POS operators and cashiers usually possess basic education and need a systematic and error tolerant environment to work within.

In addition, the POS application should be designed to cop up with peaks in workload and have to offer milliseconds response time to assure customers of prompt service.

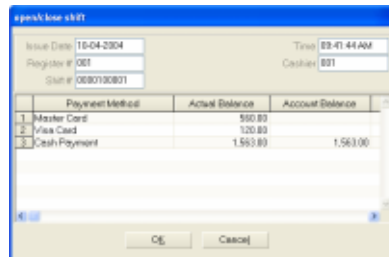


Complete support to all POS Peripherals

ASWAQ6 supports all point of sales peripherals like slip printers, keyboards, cash drawers, customer displays, barcode readers and electronic scales. ASWAQ6 utilizes hardware level services, bypassing Windows graphic printing mechanisms, while printing sales receipts and barcode labels, to print in the highest speed possible by printers.

Numerous Time Saving Features

ASWAQ6 POS contains a rich set of time saving features including temporarily holding sales transactions, and repeating items or increasing sales quantities. It also support price inquiry, cash withdrawal and receipt, and controlled return of sales. The POS module supports multiple payment methods including credit and ATM cards, foreign currency payment, and credit sales.



Working Shifts and Cash Registers Management

ASWAQ6 POS contains a complete shift and cash drawer's management. The application keeps track of running and closed shifts, and provides means for entry and allocation of cash discrepancies per drawer and cash register.

Single & simple window hosting all the POS activities

Supports ordinary and specialized POS keyboards

The fastest slip printing ever possible

Supports sales, returns, payments, and receipts

Powerful authorization and security system

Full and seamless integration with ASWAQ6



مجموعة أنظمة أجيال
تطوير و دعم أنظمة إدارة الأعمال

AJYAL SYSTEMS GROUP
Business Software Development & Services

For more information, or to arrange for a live demo, please contact our nearest branch or representative.

Kingdom of Saudi Arabia

Riyadh, Tel. : 4034507 - 4032209 - 4056321 Fax : 4055710
Jeddah, Tel. : 6632363 - 6632305 Fax : 2841806
Dammam, Tel. : 8417938 Fax : 8435853
Khamis Mushait, Tel. : 235888 Fax : 2350114
Aseer & Baha, Tel. : 235880 Fax: 2350114
Nejran, Tel. : 5231691 Fax : 5231691
Gizan, Tel. : 3225116 Fax : 3222624

State of Kuwait

Kuwait, Tel. : 4319083 - 4319084 Fax : 4314390
I.T Consulting Group, Tel. : 4845942 - 880000 Fax : 2241515

United Arab Emirates

Dubai, Tel. : 2828048 - 2868836 Fax : 2868837

State of Qatar

Computer House, Tel. : 4444130 - 4444125 Fax : 4355687

Arab Republic of Egypt

Cairo, Tel. : 5707837 Fax : 5728485

www.ajyal.com
Email : info@ajyal.com